



ITS Systems

M68x 8/16 Loop Vehicle Count and Classifier



For over 30 years Golden River Traffic Marksman vehicle classifiers have provided the heart of traffic data collection systems across the world. The Marksman 68x range raises the standard for high precision, reliable roadside data collection. The M68x builds on the success and proven reliability of the Marksman range providing unsurpassed accuracy, improved download rates and faster response times.

Designed to meet the demands of any location, the 8 or 16 loop M68x range can be either solar powered, battery alone with a charge life of up to 8 weeks or mains powered via a battery charger. The M68x has full Vehicle by Vehicle (VBV) recording capabilities and up to 10 million records can be stored in its non-volatile memory as standard. Vehicle type classification along with speed, length (interval or VBV format) are all possible within the product range.

As the loop detectors are integrated and under the control of a single processor, advanced algorithms are available to spot stopped or straddling vehicles and minimise data inaccuracy due to congested conditions. The units also feature: automatic length adjustment due to vehicle chassis height or lane position, motor cycle detection from standard loops without affecting accuracy of other traffic and built-in protection preventing any 'cross talk' between loops to further enhance accuracy and reliability.

Unlike some products in the market the M68x range is IP66 rated so that customers can be confident that it will continue to operate in the field in all weather conditions year after year.

Golden River's 'Front End' software enables simple operation of the range using PCs and PDAs. Front End provides excellent monitoring features and file management incorporating fast communications and download times. A range of standard configuration options are built in, along with user-definable set-up options, such as speed template macros. Quick and easy site-by-site programming is made possible by enabling standard parameters to be kept whilst creating new site location programmes.

Modem configuration options can also be easily programmed. Transition from existing Golden River products has been fully integrated as all data files are backwards compatible with previous models and software, and existing configuration files can be imported straight into the M68x range.

Most Marksman ITS system components are installed with telemetry for control and data retrieval and our equipment design reflects this. Modem drivers are integral to all units in the range and the remote Telemetry option utilises the already established 'GR Net' software.

Key features

- ITS Systems component
- Exceptional speed and classification accuracy
- VBV or interval recording capability
- Non-volatile memory
- Installation flexibility
- Rugged and reliable
- IP66 sealed, wide temperature range for all weather conditions
- User-friendly 'Front End' management software
- User-programmable and updatable
- Established 'GR Net' telemetry
- Internal modem drivers



General Specifications

Overall Size: 315 mm x 220 mm x 140mm

Weight: 4.4 kg

Temperature Range
Full operation -40°C to +85°C.

Environmental Protection: IP66

EMC: EN50293

Autonomy
Depending upon application, over 30 days without additional battery support is possible.

Power
Solar, battery and/or mains via charger.

Inputs
8 or 16 loop sensors, user-programmable dimensions, 50m feeders

Data Outputs
Count, gap, speed, length and headway.

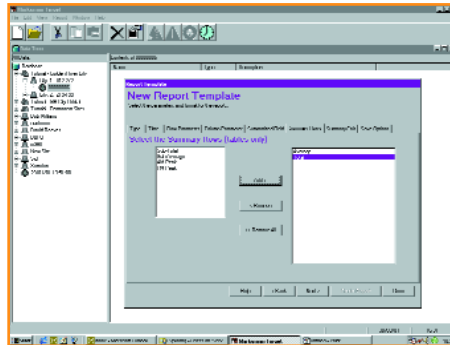
Data Styles
Interval or vehicle-by-vehicle formats.

Machine Interface
RS232 fixed at 115,200 baud

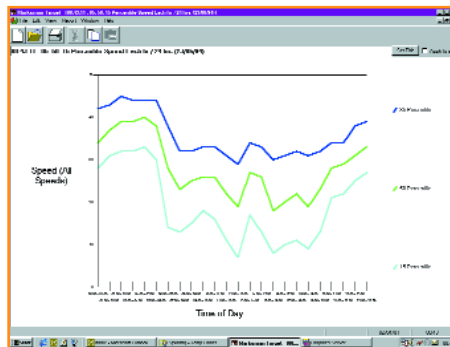
Units
All common metric and imperial units available using Golden River Front End interface software.

Software
Remotely upgradeable and reconfigurable.

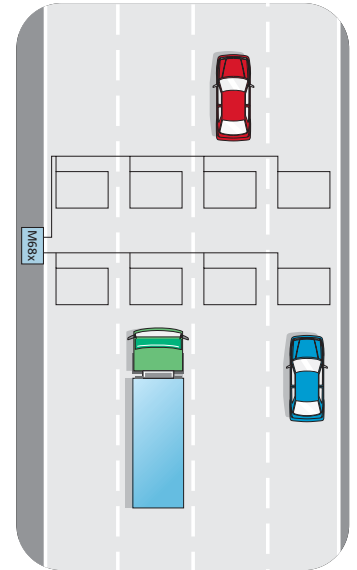
Options and Accessories
Battery Charger
Additional memory
HPLD card for enhanced accuracy and/or 200m feeders
SigProfile option for vehicle type classification
Central station software for data retrieval and control.



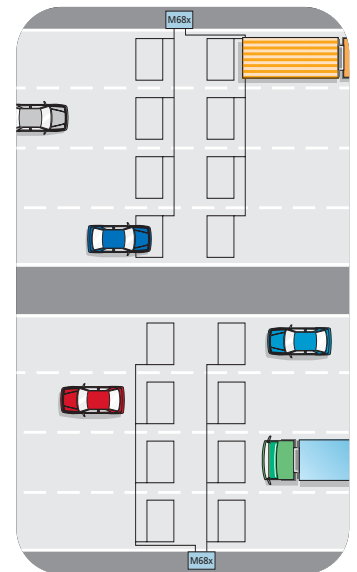
Custom Target template



85% percentile Speed plot



A typical 4-lane loop installation



A typical 8-lane loop installation (for long feeders, select the HPLD option)

Golden River Traffic reserves the right to change or modify product specifications. 'Golden River Traffic', and 'Marksman' are trade marks. World-wide Patents Coverage. All values are nominal. Brochure ref. GR15E 0307

